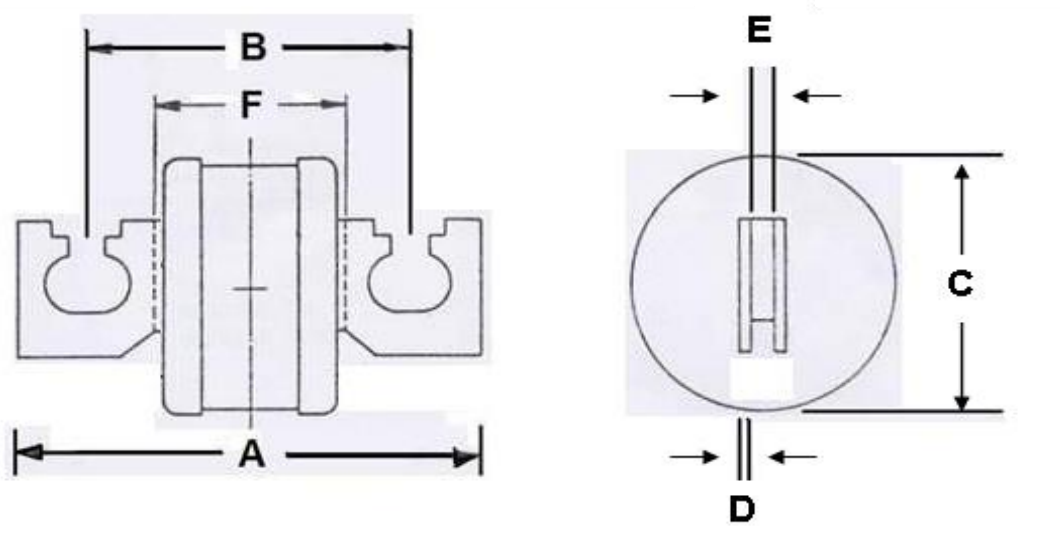


# FUSEGEAR ELECTRIC 'J' TYPE FUSE LINK – U TAG

(B.S. 88: Part 5: 1988, IEC 269)

500V AC 120kA KEMA TESTED



Type Ref	Current Rating (A)	Breaking Capacity	Dimension				
			A (mm) Max	B (mm) Nom	C (mm) Max	D (mm) Nom	E (mm) Nom
FMJ	40A, 60A, 80A, 100A, 125A, 160A, 200A, 250A	120kA at 550V	112	82	40	2.4	6.5
FNJ	315A & 400A	120kA at 550V	112	82	56	2.4	6.6

**Note:**

- All dimensions are in mm, for fixing centre at 82mm

For fixing centre at 76mm, B = 76

For fixing centre at 92mm, B = 92

